

Features

- Small and low profile
- Excellent anti-shock performance
- Reflow solderable
- First class auto placement

Applications

- Cellular phone
- Walkie & Talkie (CB, MCA)
- Car audio (AM radio section)
- Cordless phone

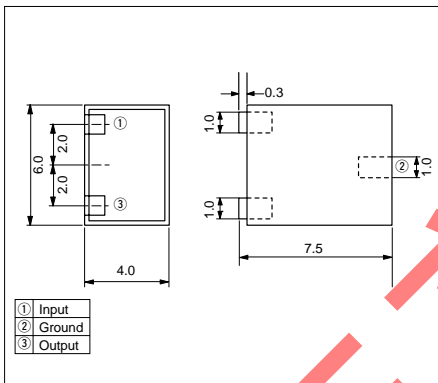
How to Order

PBFC 455 P 12 D R
① ② ③ ④ ⑤ ⑥

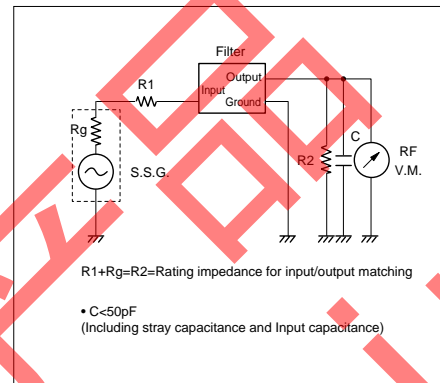
- ① Model
- ② Center Frequency (kHz)
[450-460kHz available]
- ③ No. of Element (P:4 elements)
- ④ Pass Band-Width (kHz) at 6dB
- ⑤ Application
D : General purpose
K : Group delay flat type (Telecom)
- ⑥ Packaging
(R : Taping, 1000pcs/Reel, Nil : Bulk)

Dimensions

(Unit : mm)



Test Circuit



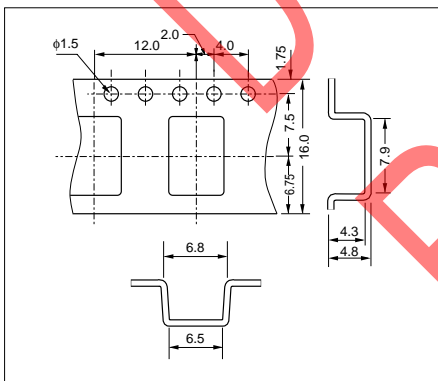
Specifications

Parts No.	Center Frequency (f ₀)	Ripple	Group Delay Time	Pass Band Width		Attenuation	Insertion Loss	Input/Output matching Impedance	Operating Temperature				
				6dB	40dB								
PBFC455P20D	455kHz ±1.5kHz	2dB max	—	±10.0kHz min	±20.0kHz max	25dB min	6dB max	1.5kΩ	-20°C to +80°C				
PBFC455P15D				±7.5kHz min	±15.0kHz max								
PBFC455P12D				±6.0kHz min	±12.5kHz max								
PBFC455P9D				±4.5kHz min	±11.0kHz max								
PBFC455P6D	455kHz ±1.0kHz	1dB max	15μSec max at 455kHz±10kHz	±3.0kHz min	±9.0kHz max					1.0kΩ	15μSec max at 455kHz±8kHz	1.0kΩ	-20°C to +80°C
PBFC455P4D				±2.0kHz min	±7.5kHz max								
PBFC455P30K	455kHz ±1.5kHz	1dB max	15μSec max at 455kHz±10kHz	±15.0kHz min	±35.0kHz max					1.0kΩ	15μSec max at 455kHz±8kHz	1.0kΩ	-20°C to +80°C
PBFC455P25K				±12.5kHz min	±30kHz max								
PBFC455P20K	455kHz ±1.5kHz	1dB max	15μSec max at 455kHz±10kHz	±15.0kHz min	±35.0kHz max	1.0kΩ	15μSec max at 455kHz±8kHz	1.0kΩ	-20°C to +80°C				
PBFC455P15K				±12.5kHz min	±30kHz max					30μSec max at 455kHz±7kHz	±10.0kHz min	±25.0kHz max	

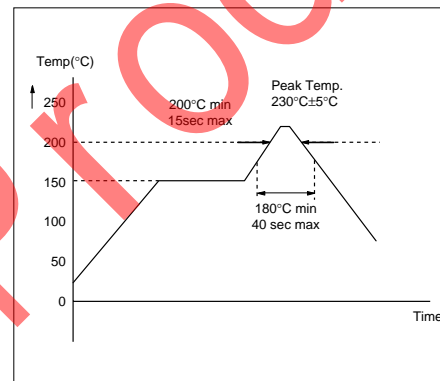
Remarks) Center Frequency is 450 to 460 kHz available.

Taping Dimension

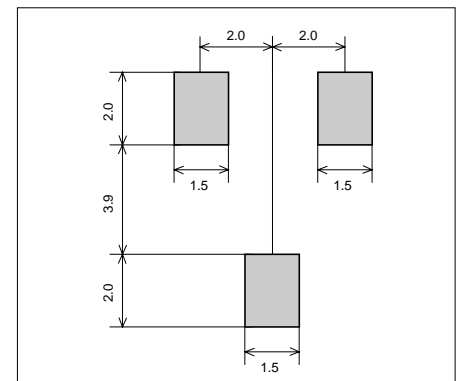
(Unit : mm)

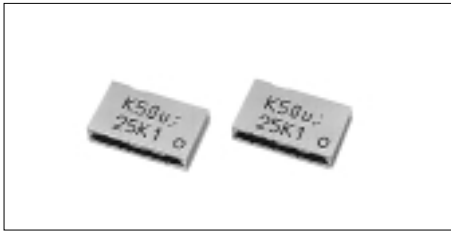


Recommended Temperature Profile



Recommended Land Pattern





Features

- Small and low profile
- Excellent anti-shock performance
- High selectivity

Applications

- Cordless phone
- Pager
- Cellular phone

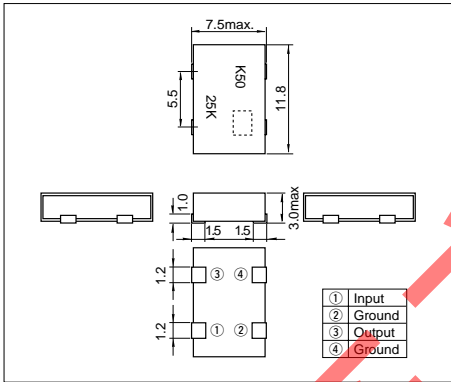
How to Order

PBFC
455
R
25
K
R

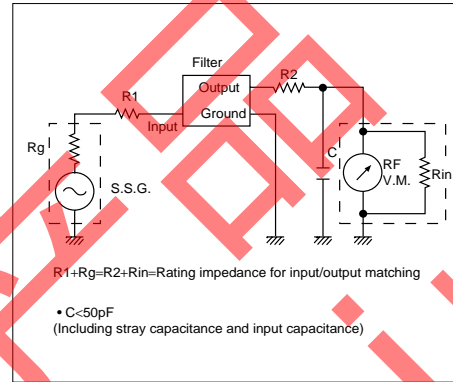
1
2
3
4
5
6

Dimensions

(Unit : mm)



Test circuit



- ① Series
- ② Center Frequency(kHz)
[450-460kHz available]
- ③ No. of Element(R : 6 elements)
- ④ Pass Band-Width(kHz) at 6db
- ⑤ Application
D : General purpose
K : Group delay flat type(Telecom)
- ⑥ Packing(R : Taping, 1000pcs/Reel)

Specifications

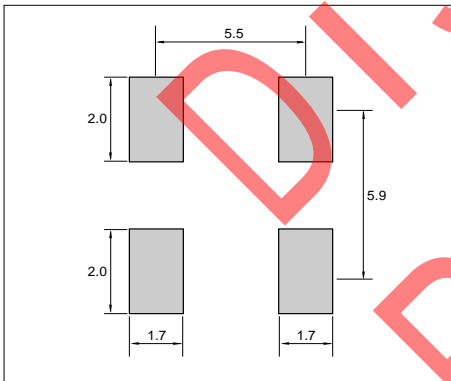
Parts No.	Center Frequency (f ₀) ^{*1}	Ripple	Group Delay Characteristics	Pass Band Width		Stop Band Attenuation	Insertion Loss	Input/Output Matching Impedance
				6dB	40dB			
PBFC455R9D	455kHz±1.5kHz	2.0dB max	30.0μsec. max (455±7.0kHz)	±4.5kHz min	±11.0kHz max	40dB min	6.0dB max	1.5kΩ
PBFC455R15D				±7.5kHz min	±15.0kHz max			
PBFC455R20D				±10.0kHz min	±20.0kHz max			
PBFC455R20K	455kHz	1.0dB max	30.0μsec. max (455±8.0kHz)	±10.0kHz min	±25.0kHz max	45dB min	6.0dB max	1.0kΩ ^{*2} (1.5kΩ)
PBFC455R25K				±12.5kHz min	±30.0kHz max			
PBFC455R30K				±14.0kHz min	±35.0kHz max			

*1 450-460kHz center frequency available

*2 1.5kΩ option in type K

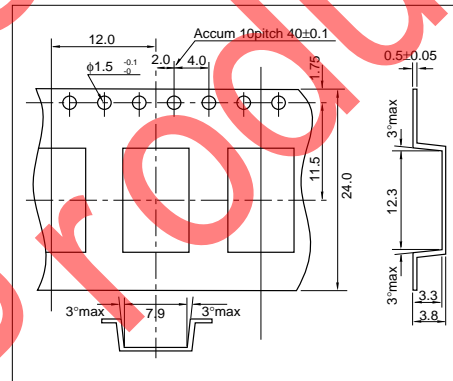
Recommended Land Pattern

(Unit : mm)



Taping Dimension

(Unit : mm)



Recommended Temperature Profile

