

Features

- Small and high selectivity
- Low insertion loss
- Adjustment free
- Various pass band width available

Applications

- Walkie & Talkie
- Car audio (AM radio section)
- Cordless phone
- Remote control receiver

How to Order

KBF - 455 RL - 15 A
 ① ② ③ ④ ⑤

- ① Model (Kyocera Bulk Filter)
- ② Center Frequency [450/455kHz available]
- ③ No. of Element
(R, RL : 6 Elements, P, PL : 4 Elements)
- ④ Pass Band-Width (kHz) at 6 dB

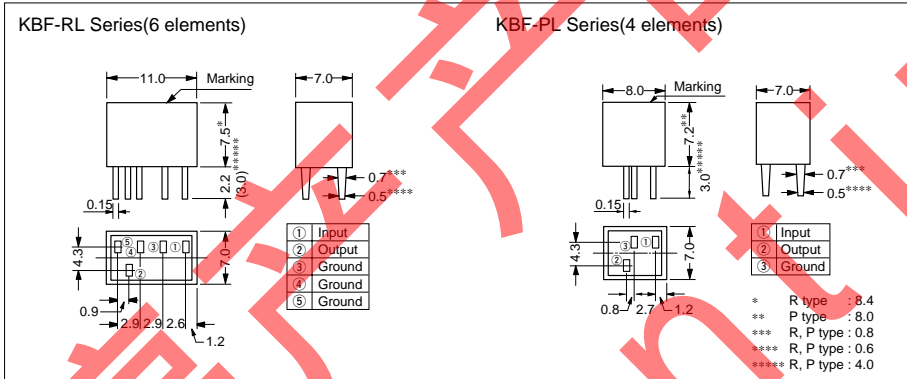
| | |
|-------------------|--------------------|
| 6 elements | 15, 10, 9, 7, 6, 4 |
| 4 elements | 15, 10, 9, 7, 6, 4 |

⑤ Selectivity

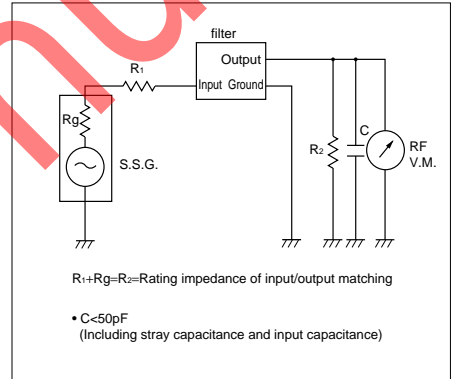
| | |
|-----------|------------------------|
| A | High Selectivity |
| AS | Super High Selectivity |

Dimensions

(Unit : mm)



Test Circuit



Specifications (455kHz)

KBF-RL series (6 elements)

| Parts No. | Center Frequency (f ₀) | Ripple | Pass Band Width | | Stop Band Attenuation | Insertion Loss | Input/Output Matching Impedance | Operating Temperature |
|---------------|------------------------------------|---------|-----------------|--------------|-----------------------|----------------|---------------------------------|-----------------------|
| | | | 6dB | 50dB | | | | |
| KBF-455RL-15A | 455kHz±1.5kHz | 2dB max | ±7.5kHz min | ±15kHz max | 37dB min | 6dB max | 1.5kΩ | -20°C to +80°C |
| KBF-455RL-12A | | | ±6.0kHz min | ±12.5kHz max | | | | |
| KBF-455RL-10A | | | ±5.0kHz min | ±12kHz max | | | | |
| KBF-455RL-9A | | | ±4.5kHz min | ±10kHz max | | | | |
| KBF-455RL-7A | 455kHz±1.0kHz | 2dB max | ±3.5kHz min | ±9kHz max | 55dB min | 6dB max | 2.0kΩ | -20°C to +80°C |
| KBF-455RL-6AS | | | ±3.0kHz min | ±9kHz max | | | | |
| KBF-455RL-4AS | | | ±2.0kHz min | ±7.5kHz max | | | | |

KBF-PL series (4 elements)

| Parts No. | Center Frequency (f ₀) | Ripple | Pass Band Width | | Stop Band Attenuation | Insertion Loss | Input/Output Matching Impedance | Operating Temperature |
|---------------|------------------------------------|---------|-----------------|--------------|-----------------------|----------------|---------------------------------|-----------------------|
| | | | 6dB | 40dB | | | | |
| KBF-455PL-15A | 455kHz±1.5kHz | 2dB max | ±7.5kHz min | ±15kHz max | 27dB min | 6dB max | 1.5kΩ | -20°C to +80°C |
| KBF-455PL-12A | | | ±6.0kHz min | ±12.5kHz max | | | | |
| KBF-455PL-10A | | | ±5.0kHz min | ±12.0kHz max | | | | |
| KBF-455PL-7A | 455kHz±1.0kHz | 2dB max | ±3.5kHz min | ±9kHz max | 35dB min | 6dB max | 2.0kΩ | -20°C to +80°C |
| KBF-455PL-6AS | | | ±3.0kHz min | ±9kHz max | | | | |
| KBF-455PL-4AS | | | ±2.0kHz min | ±7.5kHz max | | | | |

Remarks) Center Frequency is 450/455kHz available