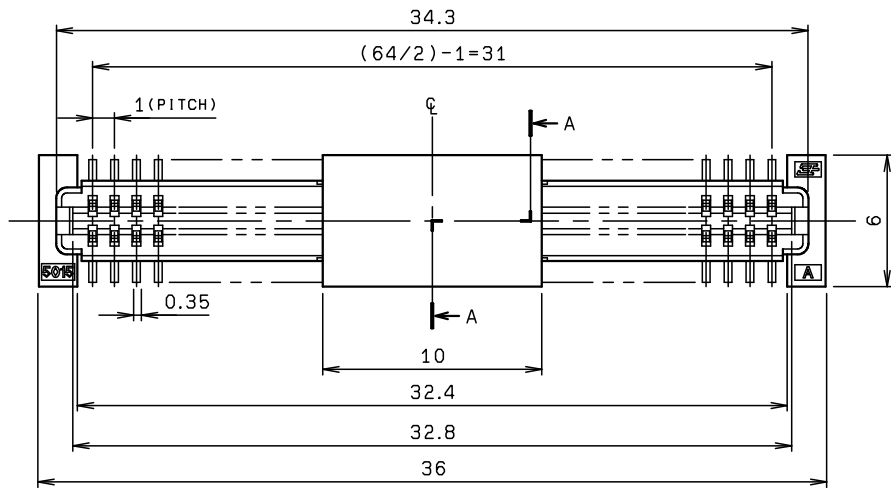
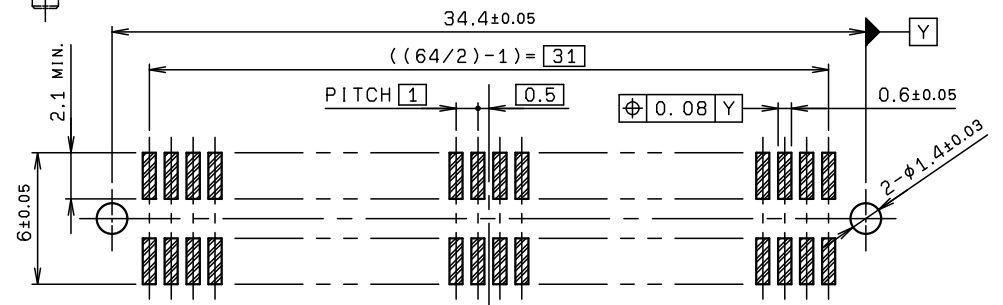
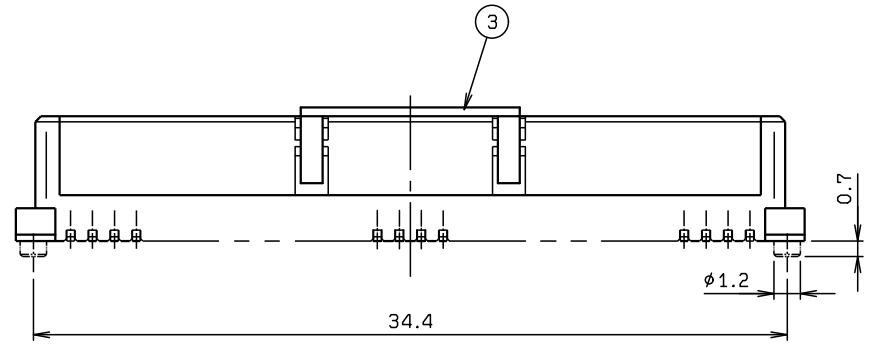
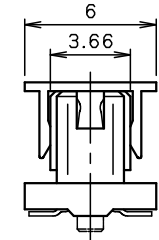
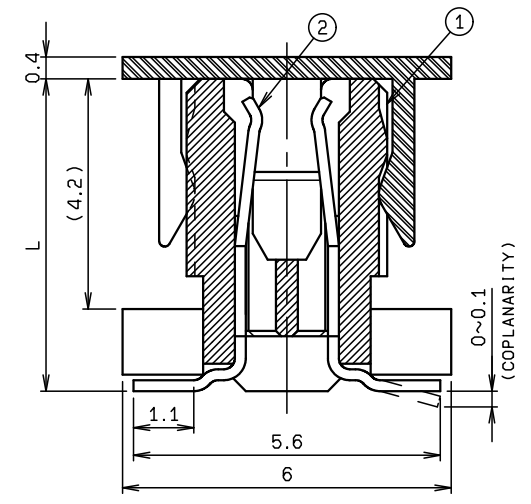


| NO. | DESCRIPTION | PART NO. | QTY | MATERIAL | DRW NO. | REMARKS |
|-----|---------------|----------|-----|-------------------------|---------|---------|
| 1 | REC INSULATOR | | 1 | HEAT RESISTING MATERIAL | | UL94V-0 |
| 2 | REC CONTACT | | 64 | PHOS-BRONZE | | |
| 3 | VACUUM CLIP | | 1 | HEAT RESISTING MATERIAL | | UL94V-0 |



| VARIATION | L |
|-----------|-------|
| STD | 5.60 |
| H2* | 7.60 |
| H3 | 8.60 |
| H5 | 10.60 |

※この表は1ページ目のみ適用
 ※THIS CHART IS APPLICABLE TO SHEET-1 ONLY.



RECOMMENDED PATTERN

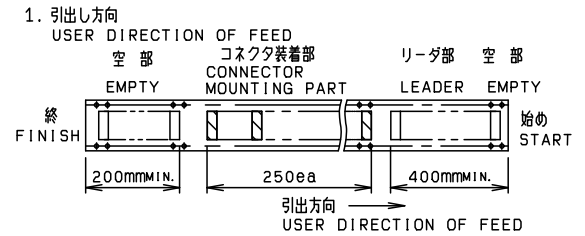
NOTE
 *MARK: IN PLANNING

| TOLERANCE / 一般公差(S) | PRODUCT SPEC / 製品規格 | C | DCN20924 | 2020/10/08 | Y. KITAMURA | K. MIYAMOTO | M. YOSHIDA |
|---------------------|---------------------|---------------------------------------|------------|--------------|-------------|--------------|------------|
| X < 10 ±0.2 | | B | DCN20731 | 2020/07/31 | Y. KITAMURA | K. MIYAMOTO | M. YOSHIDA |
| 10 ≤ X < 30 ±0.25 | UNIT | O | EDN-1360 | 2005/10/19 | M. YOSHIDA | Y. SHIROYAMA | N. HAYASHI |
| 30 ≤ X ±0.3 | mm | NO. | EDN/DCN | DATE | ISSUE | CHECKED | APPROVED |
| ANGLE / 角度 ±3° | ANGLE | PART NAME / 品名 | | | | | |
| | 3RD | SERIES 5015 REC ASSY ST SMT WITH CLIP | | | | | |
| | SCALE | PART NO. / 製番 | | | | | |
| | 4 : 1 | 24 5015 064 XXX XXX + | | | | | |
| DRAWN | DESIGNED | CHECKED | APPROVED | DWG NO. / 図番 | | | |
| T. KOMATSU | M. YOSHIDA | Y. SHIROYAMA | N. HAYASHI | BJS 5015025 | | | |
| | | | | | | | SHEET/REV |
| | | | | | | | 1/4 C |

ROHS規制対応
 COMPLIANT WITH
 ROHS REGULATIONS

| NO. | DESCRIPTION | PART NO. | QTY | MATERIAL | DRW NO. | REMARKS |
|-----|----------------|-----------------------|-----|-----------------------|---------|-----------------------|
| 1 | PLUG CONNECTOR | 24 5015 064 XXX XXX + | 250 | | | 32 5015 064 X00 XXX + |
| 2 | EMBOSSED TAPE | | 1 | POLYSTYRENE/ A-PET | | |
| 3 | TOP COVER TAPE | | 1 | POLYSTYRENE | | |
| 4 | REEL | | 1 | POLYSTYRENE | | |

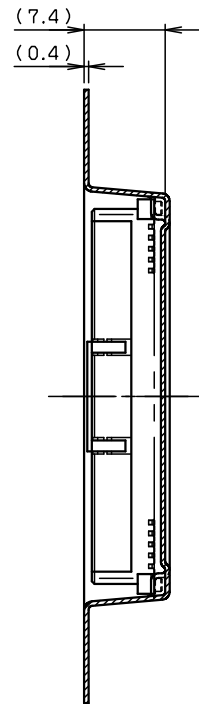
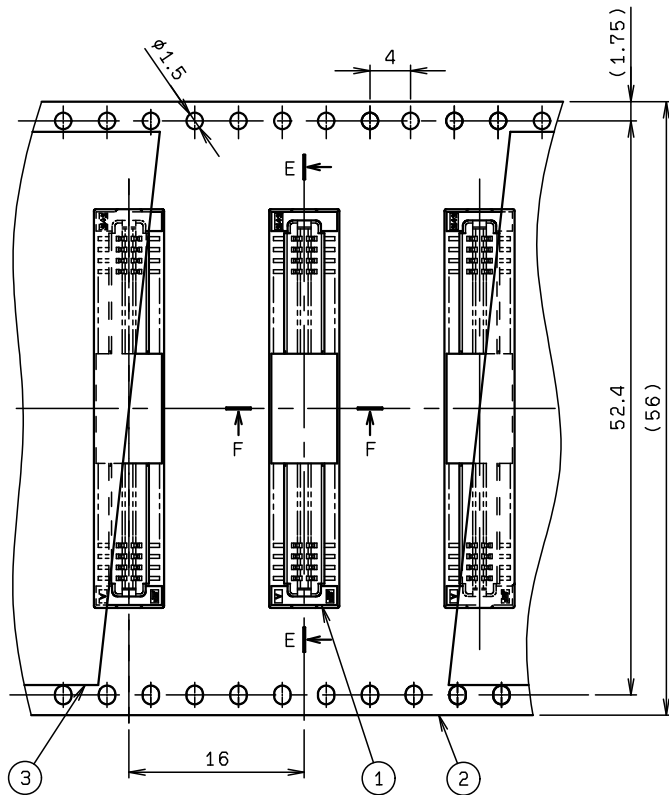
注記
NOTE



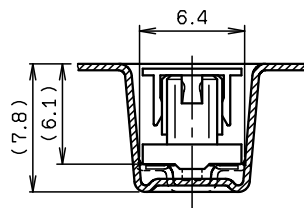
※この注記の1~2は2ページ目のみ適用
※THIS NOTES 1 TO 2 ARE APPLICABLE TO SHEET-2 ONLY.

P/N 24 5015 064 X 00 XXX +
 CODE _____
 SERIES 24: REC EMBOSSED TAPE ASSY
 5015: SERIES 5015
 NO. of CONT _____
 064: 64P
 VARIATION 1 _____
 0: WITHOUT BOSS
 1: WITH BOSS
 VARIATION 2 _____
 00: TYPE STD
 FINISH CODE _____
 861: UNDER COATED: Ni 1.2~4µm.
 CONTACT AREA: Au0.25µm MIN.
 TAIL AREA: Sn-Cu 2~4µm.
 863: UNDER COATED: Ni 1.2~4µm
 CONTACT AREA: Au0.76µm MIN.
 TAIL AREA: Sn-Cu 2~4µm.

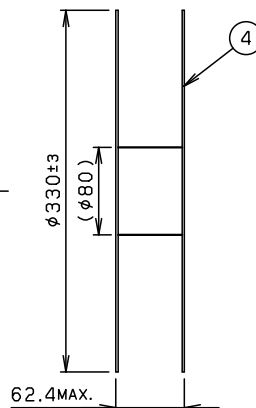
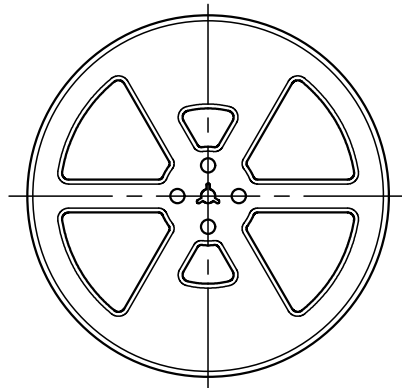
| TOLERANCE / 一般公差 (S) | | PRODUCT SPEC / 製品規格 | | | | | | | |
|----------------------|------------|---------------------|------------|-------------------------------------|---------|------|-------|-----------|----------|
| X < 10 | ±0.2 | UNIT | ANGLE | REFER TO SHEET | 1/4 | | | | |
| 10 ≤ X < 30 | ±0.25 | | | | | | | | |
| 30 ≤ X | ±0.3 | | | | | | | | |
| ANGLE / 角度 ±3° | | mm | 3RD | NO. | EDN/DCN | DATE | ISSUE | CHECKED | APPROVED |
| | | SCALE | DATE | PART NAME / 品名 | | | | | |
| | | 2 : 1 | 2004/07/28 | PARTS TAPE ASSY (REC STD) | | | | | |
| | | | | SERIES 5015 REC EMBOSSED TAPE ASS'Y | | | | | |
| DRAWN | DESIGNED | CHECKED | APPROVED | PART NO. / 製番 | | | | | |
| LI | M. YOSHIDA | Y. SHIROYAMA | N. HAYASHI | 24 5015 064 XXX XXX + | | | | | |
| | | | | DWG NO. / 図番 | | | | SHEET/REV | |
| | | | | BJS 5015025 | | | | 2/4 C | |



SECT. E-E (S=2:1)



SECT. F-F (S=3:1)



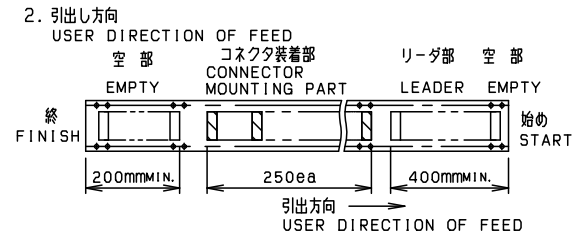
REEL DIMENSION (S=1:5)

ROHS規制対応
COMPLIANT WITH
ROHS REGULATIONS

| NO. | DESCRIPTION | PART NO. | QTY | MATERIAL | DRW NO. | REMARKS |
|-----|----------------|-----------------------|-----|-----------------------|---------|-----------------------|
| 1 | PLUG CONNECTOR | 24 5015 064 XXX XXX + | 250 | | | 32 5015 064 X05 XXX + |
| 2 | EMBOSSED TAPE | | 1 | POLYSTYRENE/ A-PET | | |
| 3 | TOP COVER TAPE | | 1 | POLYSTYRENE | | |
| 4 | REEL | | 1 | POLYSTYRENE | | |

注記
NOTE

1. 梱包数量 : 250 個/リール
PACKING QUANTITY : 250 ea/reel

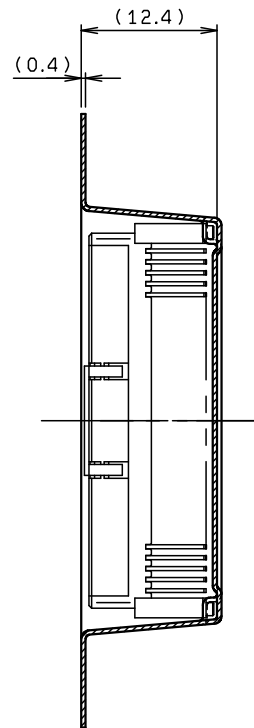
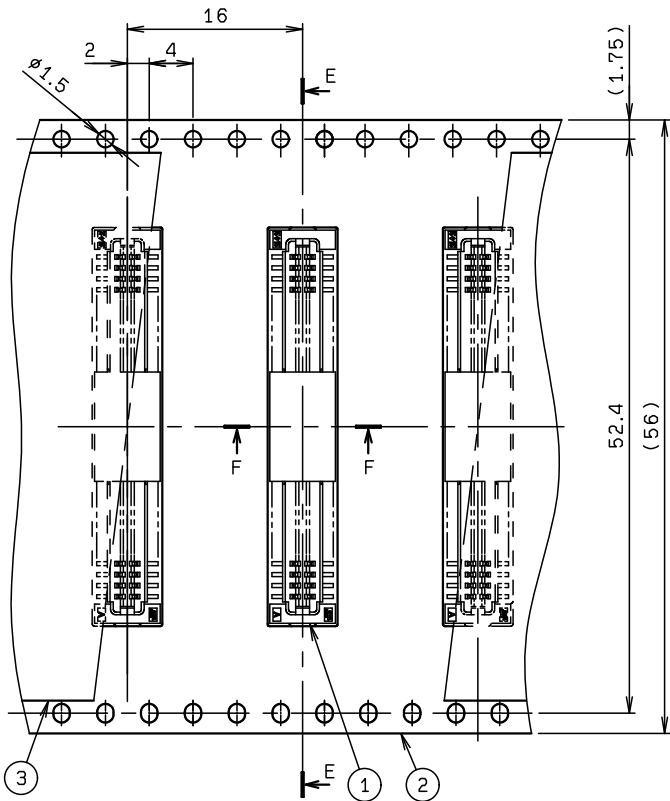


※この注記の1~3は3ページ目のみ適用

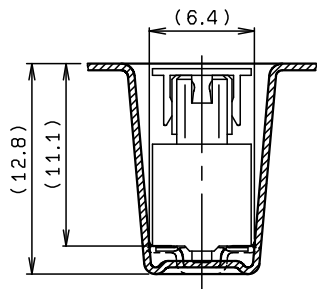
※THIS NOTES 1 TO 3 ARE APPLICABLE TO SHEET-3 ONLY.

P/N 24 5015 064 X 05 XXX +
CODE _____
24: REC EMBOSSED TAPE ASSY WITH CLIP
SERIES _____
5015: SERIES 5015
NO. OF POS. _____
064: 64P
VARIATION 1 _____
0: WITHOUT BOSS
1: WITH BOSS
VARIATION 2 _____
05: TYPE H5
PLATING CODE _____
861+: UNDER COATED: Ni 1.2~4μm
CONTACT AREA: Au, 25μm MIN.
TAIL AREA: Sn-Cu 2~4μm
863+: UNDER COATED: Ni 1.2~4μm
CONTACT AREA: Au, 76μm MIN.
TAIL AREA: Sn-Cu 2~4μm

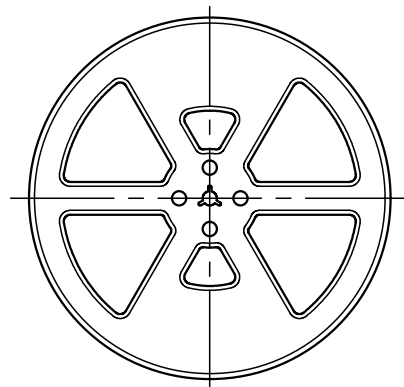
| TOLERANCE / 一般公差(S) | | PRODUCT SPEC / 製品規格 | | | |
|---------------------|------------|---------------------|------------|-----------------------|--|
| X < 10 | ±0.2 | REFER TO SHEET 1/4 | | | |
| 10 ≤ X < 30 | ±0.25 | UNIT | ANGLE | | |
| 30 ≤ X | ±0.3 | mm | 3RD | | |
| ANGLE / 角度 ±3° | | SCALE | DATE | | |
| | | 2 : 1 | 2004/09/24 | | |
| DRAWN | DESIGNED | CHECKED | APPROVED | PART NO. / 製番 | |
| T. KOMATSU | M. YOSHIDA | Y. SHIROYAMA | N. HAYASHI | 24 5015 064 XXX XXX + | |
| DWG NO. / 図番 | | | | SHEET/REV | |
| BJS 5015025 | | | | 3/4 C | |



SECT. E-E



SECT. F-F (S=3:1)



REEL DIMENSION (S=1:5)

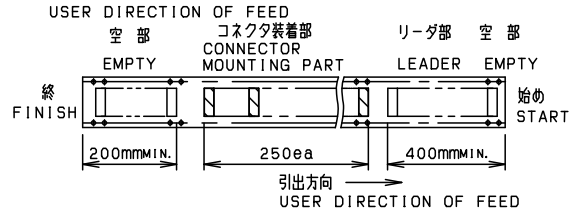
ROHS規制対応
COMPLIANT WITH
ROHS REGULATIONS

| NO. | DESCRIPTION | PART NO. | QTY | MATERIAL | DRW NO. | REMARKS |
|-----|----------------|-----------------------|-----|-----------------------|---------|-----------------------|
| 1 | PLUG CONNECTOR | 24 5015 064 XXX XXX + | 250 | | | 32 5015 064 X03 XXX + |
| 2 | EMBOSSED TAPE | | 1 | POLYSTYRENE/ A-PET | | |
| 3 | TOP COVER TAPE | | 1 | POLYSTYRENE | | |
| 4 | REEL | | 1 | POLYSTYRENE | | |

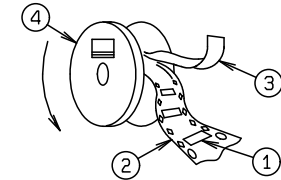
注記
NOTE

1. 梱包数量 : 250 個/リール
PACKING QUANTITY : 250 ea/reel

2. 引出し方向



3. 納入時のリール巻き方向
REELING DIRECTION
IN DELIVERY.



※この注記の1~3は4ページ目記のみ適用
※THIS NOTES 1 TO 3 ARE APPLICABLE TO SHEET-4 ONLY.

P/N

24 5015 064 X 03 XXX +

NO. OF POS.

064:64P

VARIATION 1

0:WITHOUT BOSS

1:WITH BOSS

VARIATION 2

03:TYPE H3

PLATING CODE

863:UNDER COAT Ni 1.2~4μm

CONTACT AREA:AU 0.76μmMIN.

TAIL AREA :Sn-Cu 2~4μm

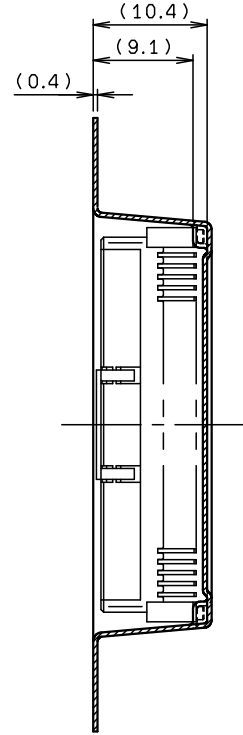
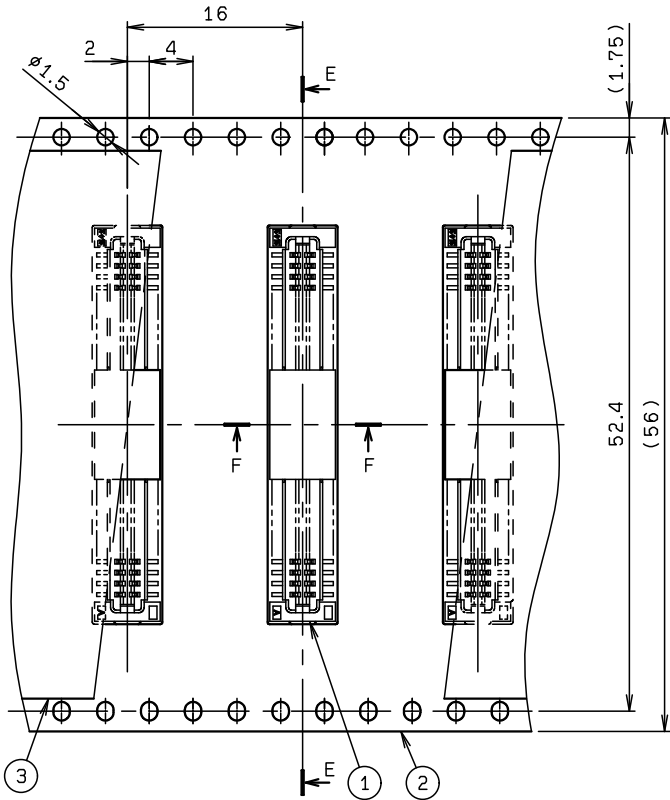
861:UNDER COAT:Ni 1.2~4μm

CONTACT AREA:AU 0.25μmMIN.

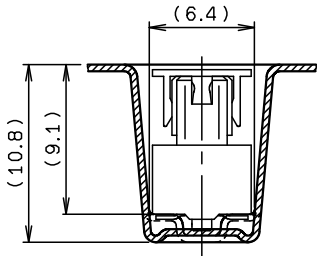
TAIL AREA :Sn-Cu 2~4μm

+ :Pb-free

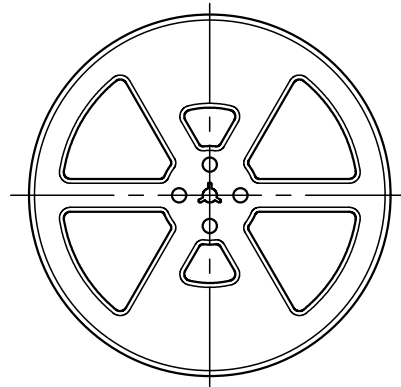
| TOLERANCE / 一般公差 (S) | | PRODUCT SPEC / 製品規格 | | | |
|----------------------|------------|---------------------|------------|---|---------|
| X < 10 | ±0.2 | REFER TO SHEET 1/4 | | | |
| 10 ≤ X < 30 | ±0.25 | UNIT | ANGLE | NO. | EDN/DCN |
| 30 ≤ X | ±0.3 | mm | 3RD | DATE | ISSUE |
| ANGLE / 角度 | | SCALE | DATE | PART NAME / 品名 | |
| ±3° | | 2 : 1 | 2005/10/19 | SERIES 5015 EMBOSS TAPE ASSY REC ASSY (REC H3) | |
| DRAWN | DESIGNED | CHECKED | APPROVED | PART NO. / 製番 | |
| T. KOMATSU | M. YOSHIDA | Y. SHIROYAMA | N. HAYASHI | 24 5015 064 XXX XXX + | |
| DWG NO. / 図番 | | | | SHEET/REV | |
| BJS 5015025 | | | | 4/4 C | |



SECT. E-E



SECT. F-F (S=3:1)



REEL DIMENSION (S=1:5)

ROHS規制対応
COMPLIANT WITH
ROHS REGULATIONS